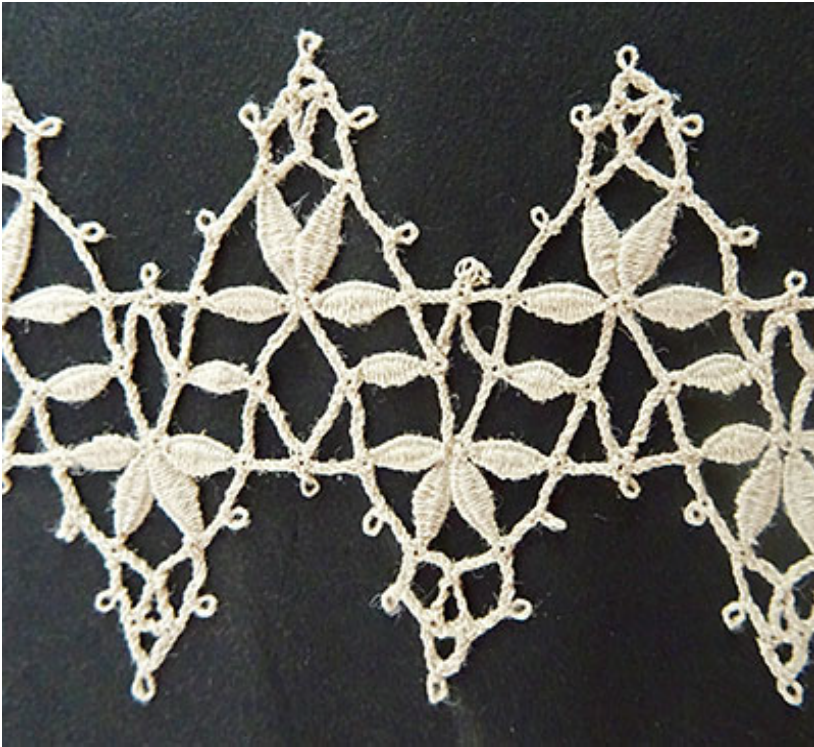


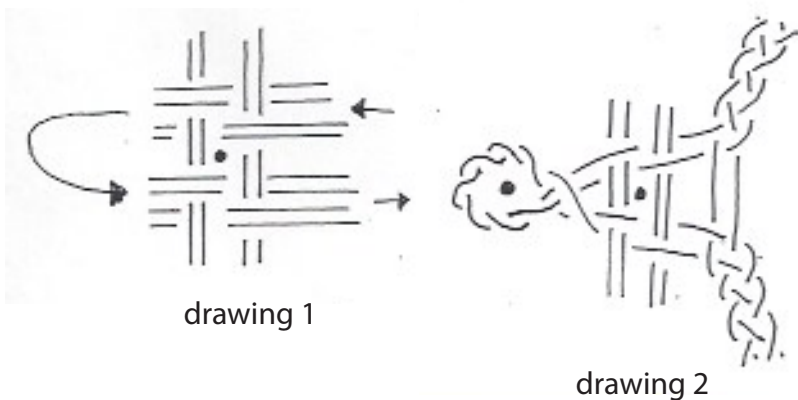
Week 35

This is the third plaited lace. Probably for application because on both sides there are arches and picots.

You need 10 pairs of bobbins with linen 80/2.



In this lace are 2 special crossings: the double 4-pairs crossing (see drawing 1) where the four leaves come together in the arch and the 3-pairs crossing (see drawing 2)with picot nearby.



Have fun this week.

