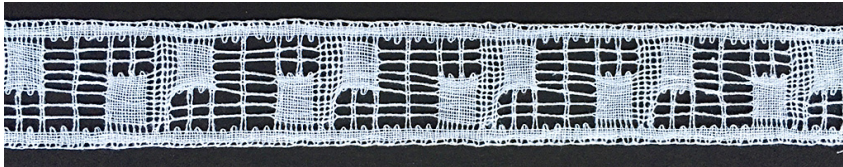


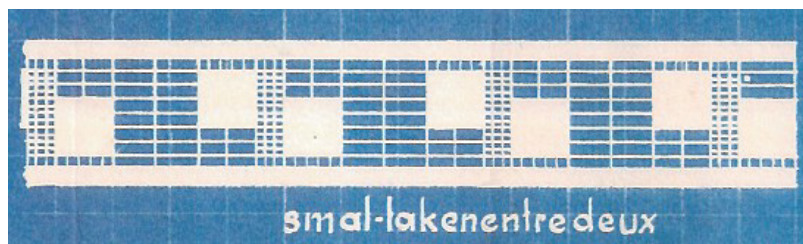
Week 52

This for now last Dutch lace was also published by the Lace Society "Heet Molenwiekje". There is no designer mentioned for this lace, but it was meant to be an narrow insertion for a bedsheet. So, ladies and gentlemen, there is some work to do.

You need 24 pairs of bobbins with linen 60/2 or similar.



This lace was drawn on blue with white squares, lines and a narrow square grid.



Now you have to imagine which stitches suit the best in this design. It is obvious that the white squares and braids should be made in cloth stitch. For the narrow grid I used whole stitch. The wider grid between the motifs is made with plaits. This is a way to read this pattern. Of course you are free to interpret it otherwise.

Have fun making this insertion. You can make it for a bedsheet but it also possible to make it use for your "pronkrol" or an other way to show it.

