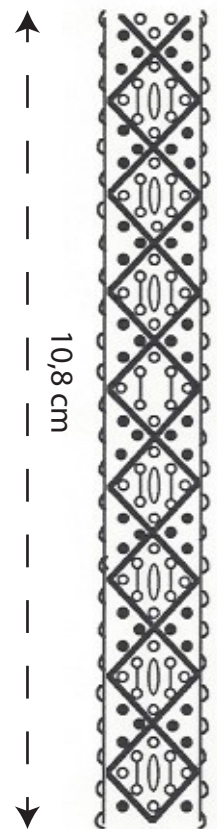


Week 15

We start a new series of laces, the Dalknypling. Dalknypling is made in Dalarna, a region in central Sweden around Lake Siljan. The most important cities are Falun and Borlänge. Here also bobbinlace was made on a bolster pillow and without a pattern. These traditional laces are influenced by the Vadstena laces, which were also bought and used here by the rich farmers. Techniques and motives were imported in the original laces, but still they were made on bolster pillows and with only pins at the edges of the lace.

For this insertion you need 8 pairs of bobbins with linen 80/2 + 1 gimp in another color, i.o. coton perlé 8 or similar



The drawing on the right is not really a pattern as a diagram. Using linen 80/2 you can use it as a pattern. Do you prefer thicker thread you should have to enlarge it or decide to work the original way without a pattern.

In Dalknypling pins are only used in the so called 'kantöglan'. The symbol used for these are the half circles along the line at the edges. They are worked as follows:

1 whole stitch, twist the outer pair 3x or more times if you like a larger loop, pin, twist the inner pairs once, 1 cloth stitch.

The other symbols in the insertion are:

- a black circle for a whole stitch (twist, cross, twist, cross)
- a open circle for a double stitch (twist, cross, twist, cross, twist, cross)

You can use a temporary pin within the little triangles of the honeycomb to prevent that the straight pair which changes direction closes them.