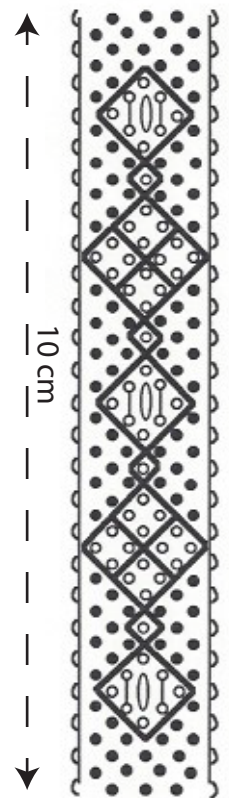


## Week 17

Again a Dalknypling from Dalarna, Sweden.

This one is called Clover. Perhaps you need to have a good look to understand why it is called this way.

You need 10 pair of bobbins with linen 80/2 + 1 pair with a gimp ie. coton perlé 8 or similar.



The drawing on the right is not just a pattern but also a diagram. You can use it for linen 80/2. Do you prefer a thicker thread you have to enlarge the drawing or do it the original way without a pattern.

In Dalknypling pins are only used at the edges in the so called. 'kantöglan'.

For these the symbol of the half circle beside the line at the edges is used. They are worked as follows: 1 whole stitch, twist the outer pair 3x or more if you prefer a bigger loop, pin, twist the inner pair once, 1 cloth stitch.

The other symbols in this insertion are:

- a black round for the whole stitch (twist, cross, twist, cross)
- a open circle for the double stitch (twist, cross, twist, cross, twist, cross).

Originally these laces were made on a bolster pillow. Therefore the open method was used to see quickly if the bobbins were on the right place.