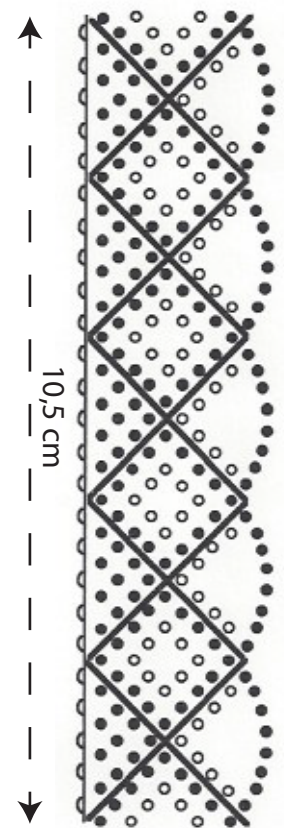


## Week 19

This is the last Dalknypling of this series. It is an edging with a fan and a diamon, both in cloth stitch.

Also in this edging the pins should be placed only at the edges. Of course this makes it more difficult to keep the motifs in shape.

You need 12 pairs of bobbins with linen 80/2 + 2 bobbins with a gimp i.e. coton perlé 8 or similar.



The drawing on the right is not just a pattern but also a diagram. You can use it for linen 80/2. Do you prefer a thicker thread you have to enlarge the drawing or do it the original way without a pattern.

In Dalknypling pins are only used at the edges in the so called. 'kantöglan'.

For these the symbol of the half circle beside the line at the edges is used. They are worked as follows: 1 whole stitch, twist the outer pair 3x or more if you prefer a bigger loop, pin, twist the inner pair once, 1 cloth stitch.

The other symbols in this insertion are:

- a black round for the whole stitch (twist, cross, twist, cross)
- a open circle for the double stitch (twist, cross, twist, cross, twist, cross).

As you can see in the photo for or after the gimp there is 1 twist.

Originally these laces were made on a bolster pillow. Therefore the open method was used to see quickly if the bobbins were on the right place.