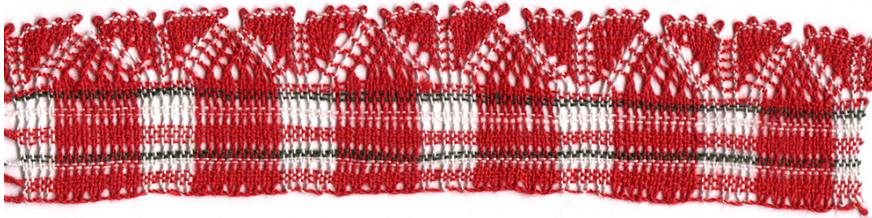


Week 23

This Michailov edging is called 'trees'. Perhaps you have to look twice, but you can see the trunk and the treetop. It is made through the use of colors.

You need 17 pairs of bobbins with linen 40/2 or similar



The thread diagram below shows how to work the lace and where the pins are placed. The best start is in the middle of the thread diagram where the arrows are.

