

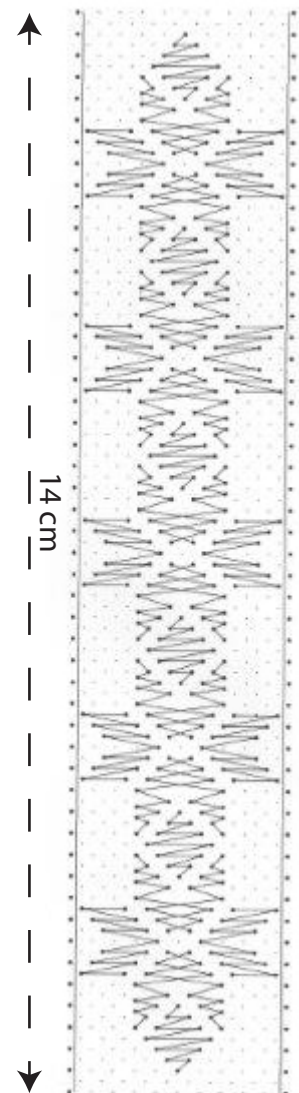
Week 39

The motifs in the 100th and very last insertion are the starflower and a diamond in half stitch.

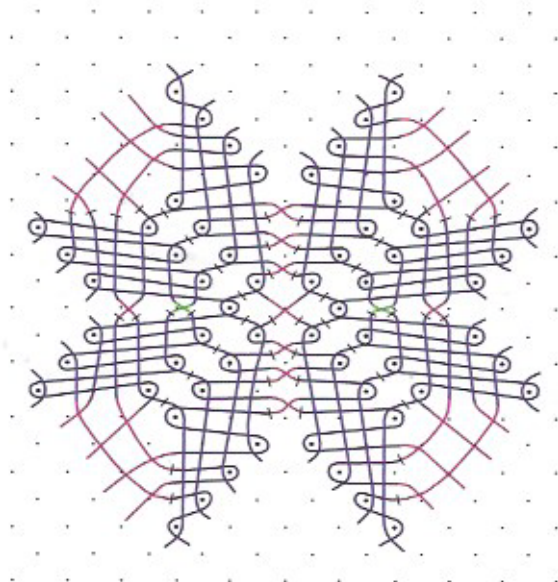
This Pettersson lace is also made on a pricking of only pinholes. On this pricking more than one lace can be made. The laceworker places the pins only there where the pattern requires it. This will be only at the edges and along the motifs. No pins in the ground. This means in this case only pins on the black dots, no pins on the grey dots in the ground.

This insertion is designed for us by Bep Hoogerbrugge.

You need 24 pairs of bobbins with linen 80/2 or 100/2 or similar.



Beneath you see the working diagram of the starflower.



Between the 2 under petals of the first star and the upper petals of the other one the diamond in half stitch is made.

We hope that you enjoyed making or will enjoy making these 100 edgings and insertions. Show us some on the Facebook page "Kantje per week".